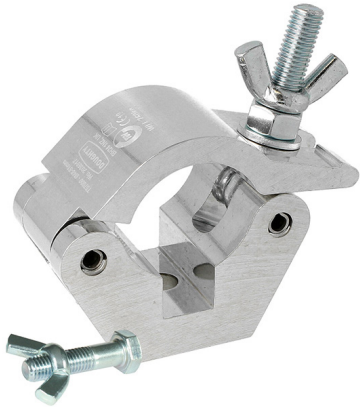




Doughty Hook Clamp Coupler



Product Data Sheet



A standard half coupler supplied with Fixing Kit Slotted to hold captive an M12 Nut or Bolt	
Part Nos	T57200 - Polished T57201 - Powder Painted Satin Black
Tube Diameter	Ø48 - 51mm (1.89" - 2.01")
Materials	Main Body - AW6082 T6 Aluminium Roll Pins - Stainless Steel Eyebolt Assy - Grade 8.8
Max Tightening Torque	30Nm
Fixings	M12 Bolt and Wing Nut
WLL	750Kg
Weight	0.71Kg (1.57 lbs)
Factor of Safety	5:1
Approval	TÜV Approved

Dimensions in mm

