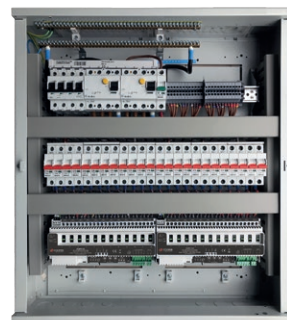


# RIGSWITCH

## REMOTE CONTROLLED POWER SWITCHING

### KEY FEATURES

- 12 or 24 circuits of feed through relays per cabinet
- Remote button panels available, or use any switch via contact closure
- Intelligent propagation delay to reduce power-up inrush nuisance tripping
- Manual override of any circuit (mechanical, not digital)
- 10 or 16 Amps per circuit
- Neutral Disconnect MCBs (with incoming RCD) or RCBO per circuit
- DMX control per circuit (or control via DALI and iCANnet)
- Includes cable gland plate insert (top)
- 3 year warranty
- CE compliant to all relevant standards
- Designed and manufactured to ISO9001:2015 standards



### OVERVIEW

RigSwitch is a remote controlled power switching solution suitable for any size venue, utilising a broad portfolio of power management technologies.

RigSwitch can be delivered in 12 or 24 channel cabinet configurations with RCD or RCBO options with a choice of user control interfaces. With individual relays rated for up to 32A operation RigSwitch can cater for even the most power hungry user.

RigSwitch is ideal for switching power for today's modern entertainment lighting systems, including moving lights, LEDs, amplifiers, specials and video equipment.

## ORDERING INFORMATION

0050-000063-00	RigSwitch, 12 channels, 10A MCB (ND) with 4 pole isolator
0050-000064-00	RigSwitch, 12 channels, 10A MCB (ND) with 4 pole isolator & RCD
0050-000065-00	RigSwitch, 12 channels, 10A RCBO with 4 pole isolator
0050-000066-00	RigSwitch, 12 channels, 16A RCBO with 4 pole isolator
0050-000067-00	RigSwitch, 24 channels, 10A MCB (ND) with 4 pole isolator
0050-000060-00	RigSwitch, 24 channels, 10A MCB (ND) with 4 pole isolator & RCD
0050-000061-00	RigSwitch, 24 channels, 10A RCBO with 4 pole isolator
0050-000062-00	RigSwitch, 24 channels, 16A RCBO with 4 pole isolator

## SPECIFICATIONS

- Manufactured in the United Kingdom
- IP Rating IP30 Indoor Use Only
- Operating Temperature: 0 - 40°C
- Storage Temperature: -10 - 50°C
- Operating Relative Humidity (max) 80% non condensing
- Inputs:
  - DMX512-A
  - DALI
  - iCANnet (CAN bus)
- 3 year warranty
- CE compliant to all relevant standards
- Designed and manufactured to ISO9001:2015 standards

## DIMENSIONS:

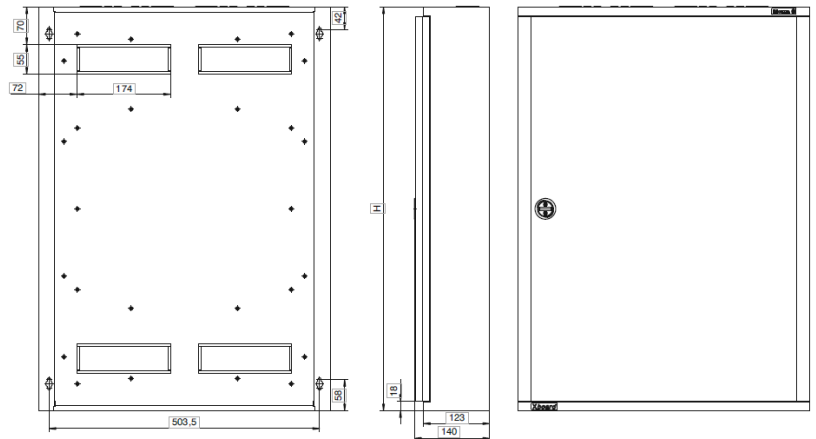
RigSwitch 12 Channel: 450(H) x 543(W) x 140mm(D)

RigSwitch 24 Channel: 600(H) x 543(W) x 140mm(D)

## Weight:

RigSwitch 12 Channel 18.0kg max.

RigSwitch 24 Channel 20.0kg max.



## CONTACT US

+44 (0)1633 838088

[www.vari-lite.com](http://www.vari-lite.com)

©2018-2021 Signify Holding.  
All Rights Reserved.

RigSwitch\_Datasheet\_UK\_Rev5\_0921

Changes to the products, to the information contained in this document, and to prices are reserved; so are errors and omissions.

Zero 88 is a registered trademark.

All other trademarks are property of their respective owners.



FM 727924